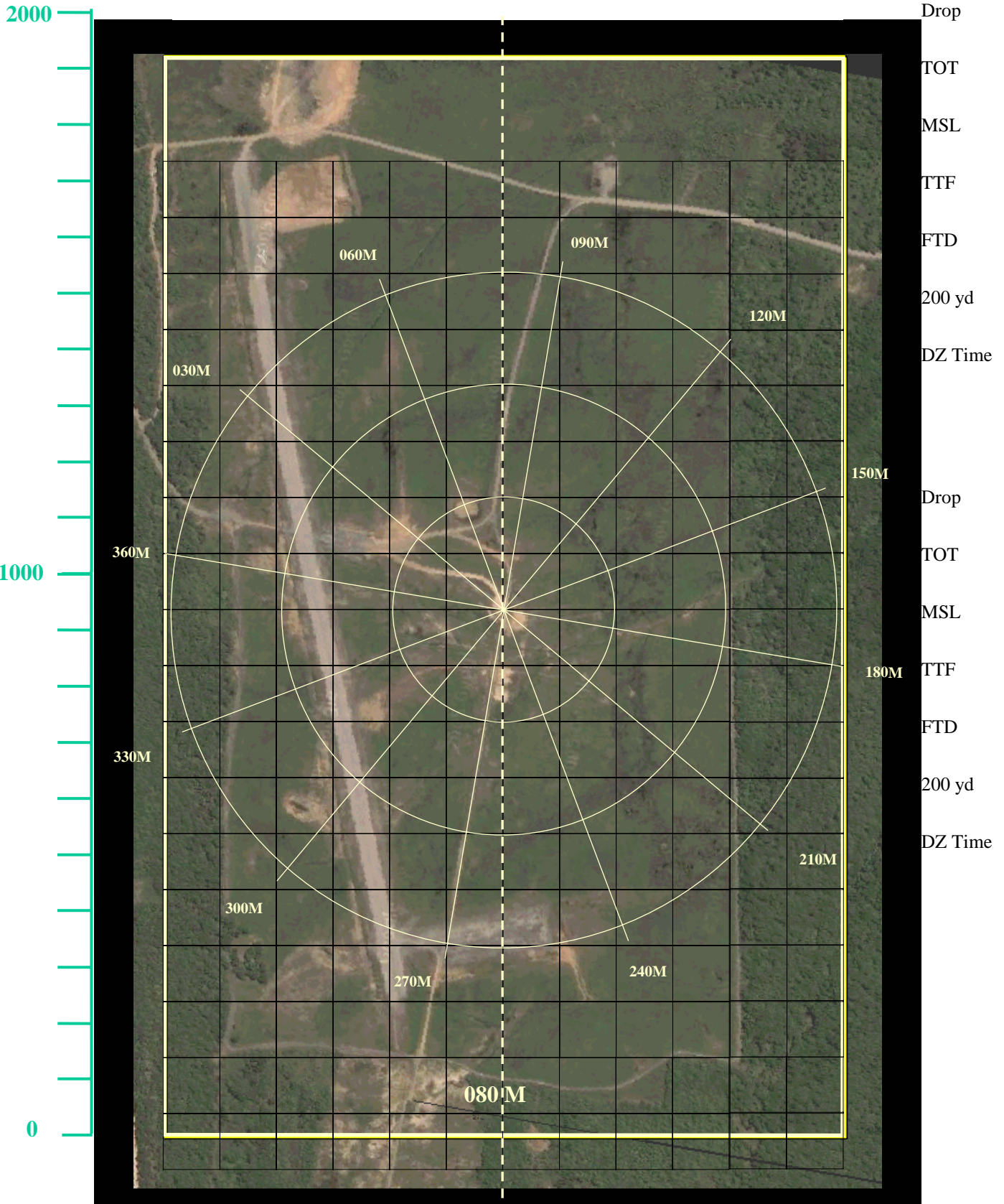


# All-American DZ 080° run-in

1936 yd x 1200 yd / Block Letter "A"

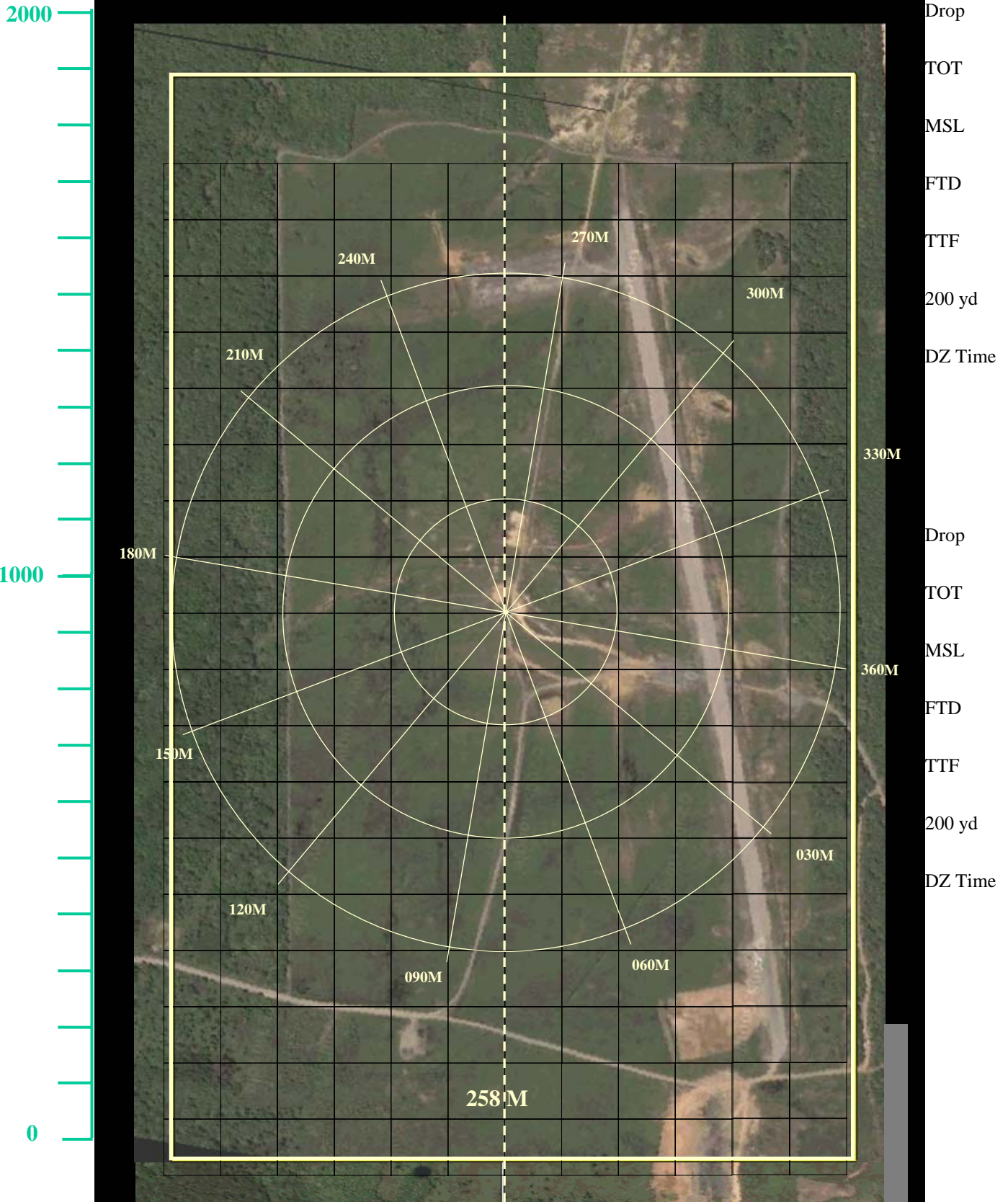


Extracted from Google Maps Imagery by 1Lt John Wrazin, 61 AS, 21 Jun 05

Note: Best if printed on color printer with "color" option selected (not grayscale). Otherwise, lines will appear black and will be difficult to see

# All-American DZ 258° run-in

1936 yd x 1200 yd / Block Letter "A"

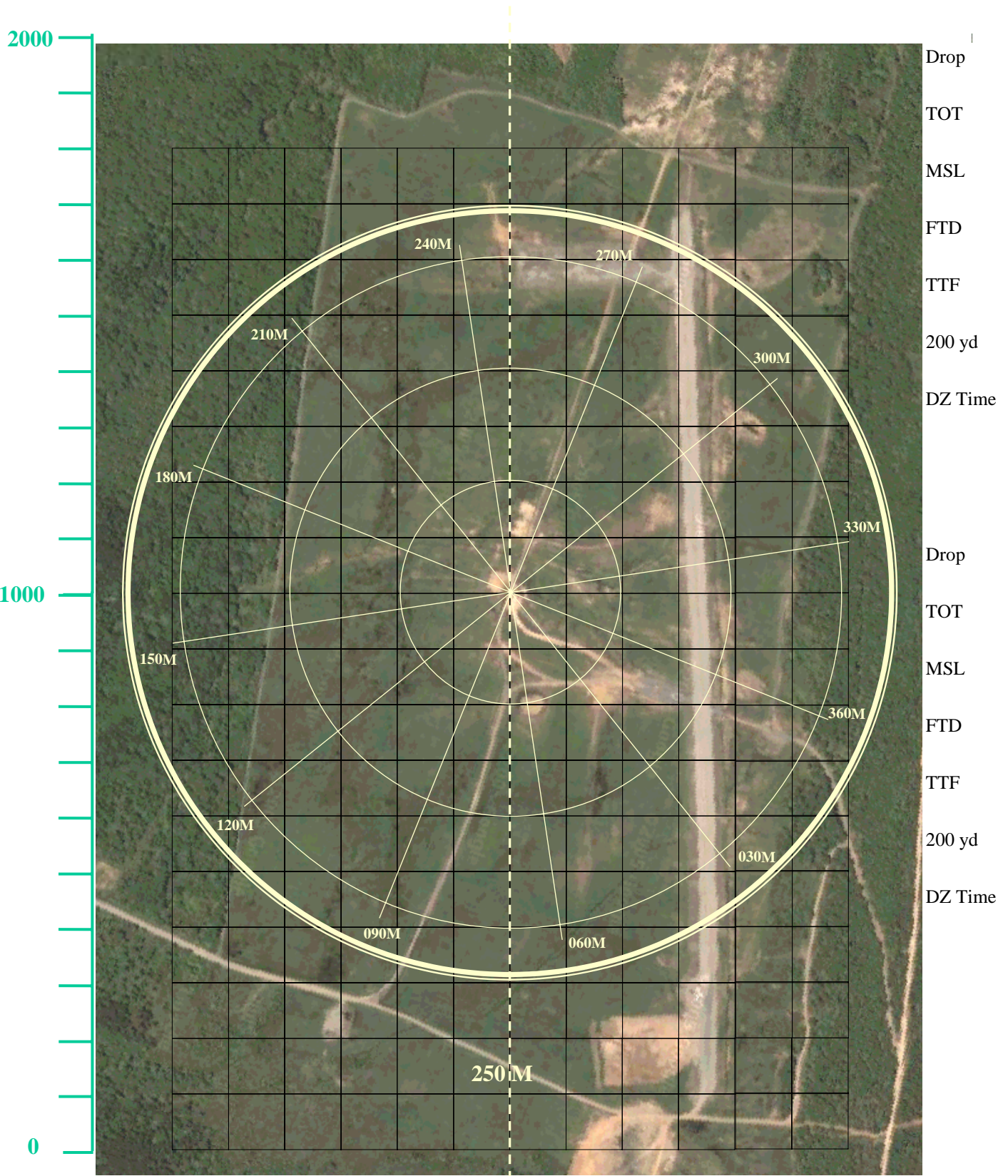


Extracted from Google Maps Imagery by 1Lt John Wrazin, 61 AS, 21 Jun 05

Note: Best if printed on color printer with "color" option selected (not grayscale). Otherwise, lines will appear black and will be difficult to see

# All-American DZ 250° run-in

## 683yd Radius / Block Letter "A"



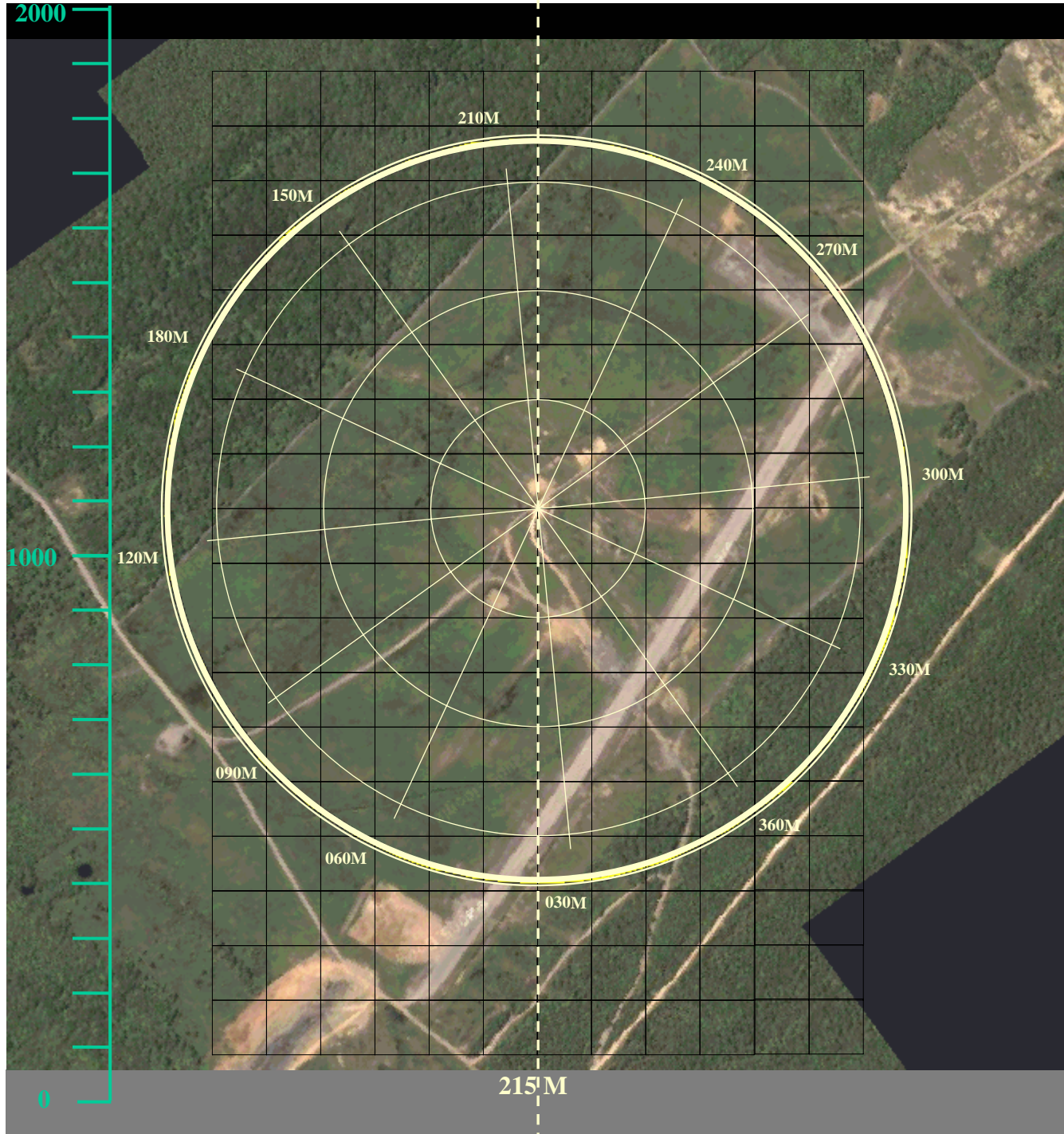
Extracted from Google Maps Imagery by 1Lt John Wrazin, 61 AS, 02 Aug 05

Note: Best if printed on color printer with "color" option selected (not grayscale). Otherwise, lines will appear black and will be difficult to see

# All-American DZ 215° run-in

**683 yd Radius**  
**Block Letter "A"**

Drop	FTD	Drop	FTD
TOT	TTF	TOT	TTF
MSL	200 yd	MSL	200 yd
	DZ Time		DZ Time



Extracted from Google Maps Imagery by 1Lt John Wrazin, 61 AS, 07 Jul 05

Note: Best if printed on color printer with "color" option selected (not grayscale). Otherwise, lines will appear black and will be difficult to see

# All-American DZ 183° run-in

Drop

FTD

**683 yd Radius**  
**Block Letter "A"**

Drop

FTD

TOT

TTF

TOT

TTF

MSL

200 yd

MSL

200 yd

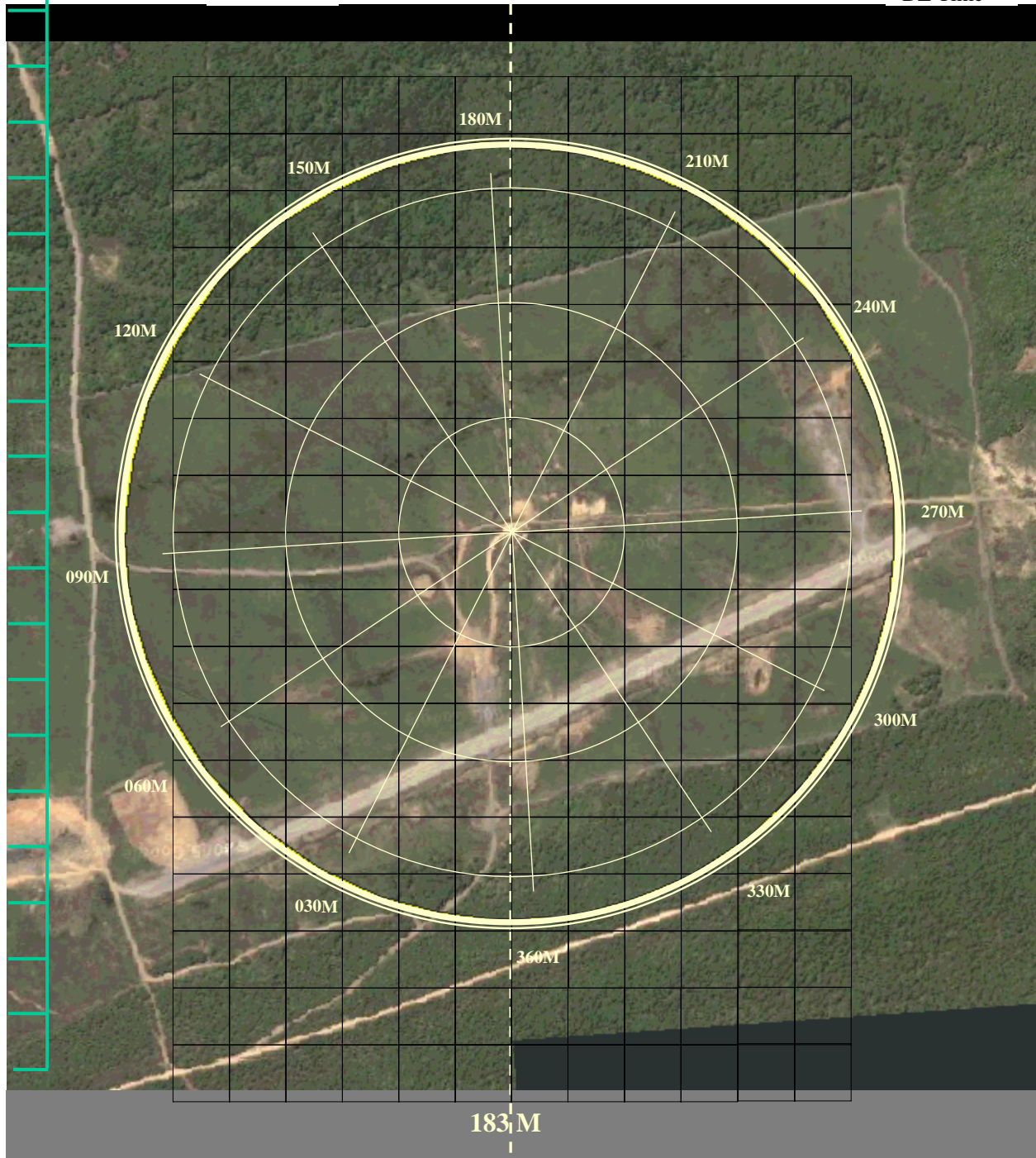
DZ Time

DZ Time

2000

1000

0



Extracted from Google Maps Imagery by 1Lt John Wrazin, 61 AS, 7 Jul 05

Note: Best if printed on color printer with "color" option selected (not grayscale). Otherwise, lines will appear black and will be difficult to see